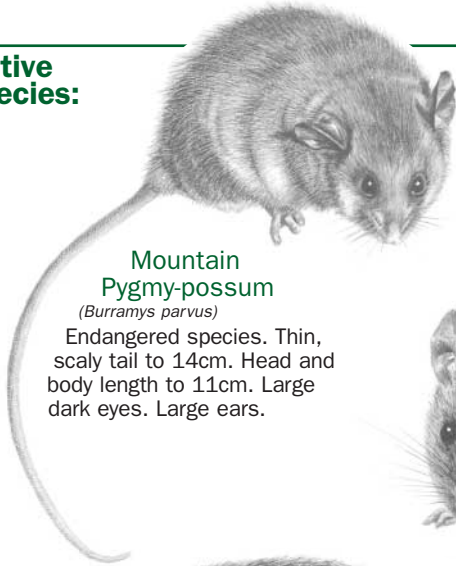


Most small mammals inhabiting buildings in alpine areas are native.

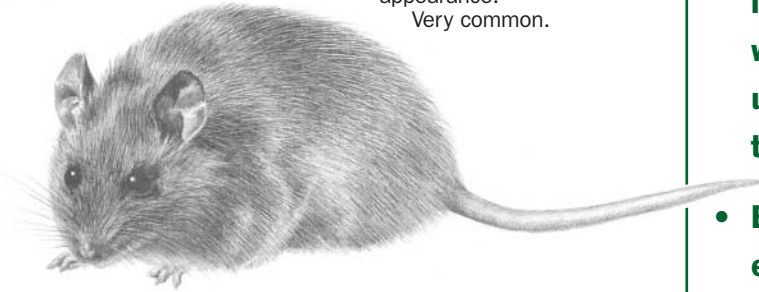
What to do if you have native mammals in your building...

Native species:

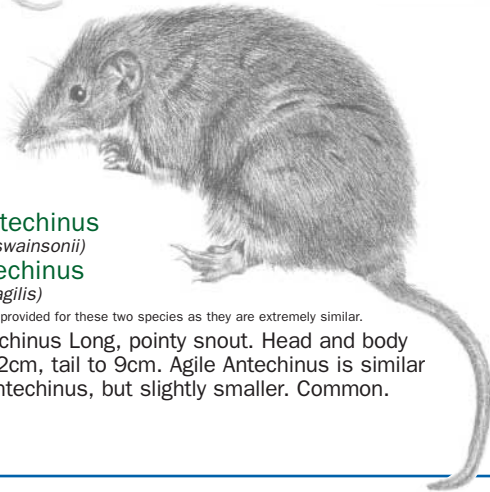


Mountain Pygmy-possum
(*Burramys parvus*)
Endangered species. Thin, scaly tail to 14cm. Head and body length to 11cm. Large dark eyes. Large ears.

Southern Bush Rat
(*Rattus fuscipes*)
Head and body length to 18cm, tail to 15cm. Typical rat-like appearance. Very common.



Broad-toothed Rat
(*Mastacomys fuscus*)
Threatened species. Thin, hairy tail to 11cm. Head and body length to 16cm. Round, spherical appearance.



Dusky Antechinus
(*Antechinus swainsonii*)
Agile Antechinus
(*Antechinus agilis*)

Only one image is provided for these two species as they are extremely similar. Dusky Antechinus Long, pointy snout. Head and body length to 12cm, tail to 9cm. Agile Antechinus is similar to Dusky Antechinus, but slightly smaller. Common.

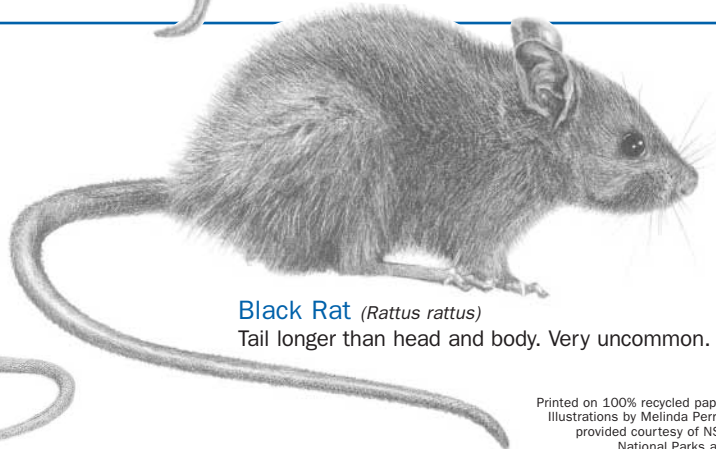


Exotic species:

House Mouse
(*Mus musculus*)
Small with broader snout than Antechinus. Very uncommon.



Black Rat (*Rattus rattus*)
Tail longer than head and body. Very uncommon.



- Ensure areas where food is kept or consumed are clean. Check behind fridges, in cupboards and beneath dishwashers for food scraps or crumbs;
- Ensure all food is securely locked away in airtight containers where animals are unable to get access to it;
- Block up any entrances, holes or gaps through which animals can access living areas;
- Learn to live with them - they are difficult to remove and are protected by law;
- Do not use snap traps or poison baits.

For more information on these or other animals in alpine areas, or to report a sighting of a Mountain Pygmy-possum or Broad-toothed Rat, contact your local Resort Management Board or Parks Victoria office.

Printed on 100% recycled paper. Illustrations by Melinda Perrin, provided courtesy of NSW National Parks and Wildlife Service.



5777 6077



5165 1136



5759 3550



5758 3224



5963 3288



13 1963