

Front cover: *Black Gums and Snow* by James Guy

ARTS & ARTIFACTS WALK

A self-guided walk
around Mt Buller's arts,
culture and heritage
based features.



1800 BULLER
mtbuller.com.au
info@mtbuller.com.au



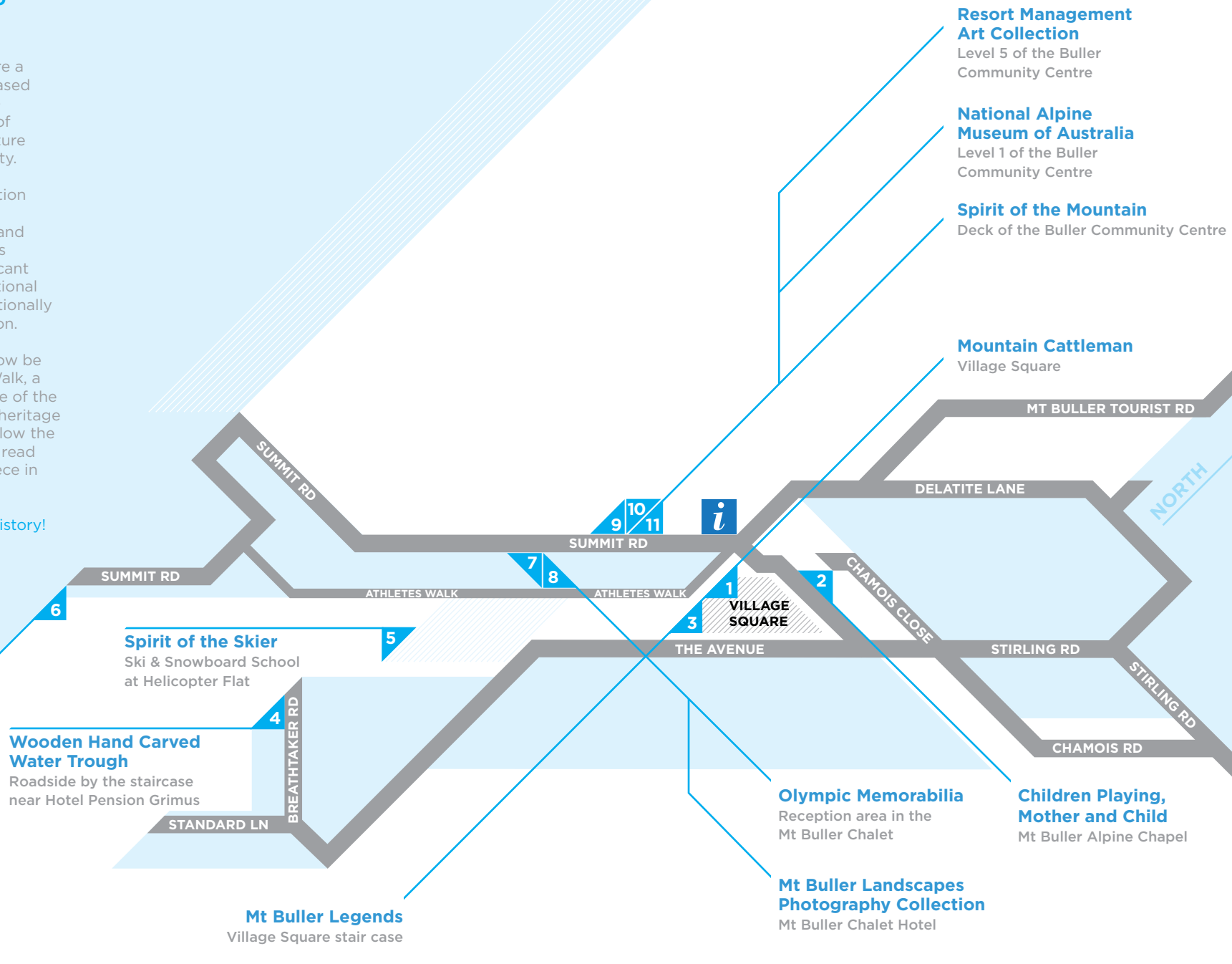
Mt Buller has a rich and varied history that reflects the mountain's evolution from a cattleman's run into a mature alpine resort.

Located throughout the Village are a number of artistic and heritage based pieces that are a testament to the dynamic and ever changing face of Mt Buller, which celebrate the culture of this unique mountain community.

What started as a disparate selection of works has grown to become a comprehensive collection of arts and artifacts, encompassing Australia's National Alpine Museum, a significant collection of works from local, national and international artists, and a nationally recognized Art Prize and Exhibition.

The best of these elements can now be found on the Arts and Artifacts Walk, a self guided tour that takes in some of the most prominent arts, culture and heritage items on the mountain. Simply follow the numbers marked on the map and read about the background of each piece in this book.

Enjoy learning about Mt Buller's history!





1 **Mountain Cattleman**

By Michael Meszaros
Village Square

The *Mountain Cattleman* is a bronze statue that was commissioned by Rino Grollo in 1996. This work is a tribute to the cattleman and their families who pioneered the High Country.

Mountain Cattleman was created by Michael Meszaros, a world renowned sculptor who has produced a range of medallions, reliefs, trophies, portraits and major public works over his thirty year career. He is also the creative talent behind Mt Buller's other most notable statues including Spirit of the Skier and Children Playing.

2 **Children Playing, Mother and Child**

By Michael Meszaros
Mt Buller Alpine Chapel

Outside the Alpine Chapel are some charming bronze sculptures of a mother and her children playing in the snow. They were commissioned by the Grollos, with the statues of the children sculpted to the likeness of the Grollo children, as per a family photograph.

Also in this area is a historic marker that was erected in 1995 by the Grollo family to commemorate the end of World War II.

3 **Mt Buller Legends**

Village Square stair case

Mt Buller has a long and varied history that has been driven by people who have a passion for the mountain and its future. It is the people of Buller – the resort's legends and personalities – who are celebrated in this area. Most of these people are still at Mt Buller today, so you may just recognize them when you next grab a bite to eat, check into your accommodation, or are wandering around the Village.

4 Wooden Hand Carved Water Trough

By Eva Shubert

Roadside by the staircase leading up to Hotel Pension Grimus

At the age of 86, sculptor Eva Shubert was commissioned by the Grimus family to create a wooden hand carved trough for Hotel Pension Grimus. This trough is reminiscent of those that were used to water horses in Austria - the Grimus's home country. The current trough was installed in 2007, replacing the previous trough that had stood there since the hotel's opening in 1973.

5 Spirit of the Skier

By Michael Meszaros

In front of the Ski & Snowboard School at Helicopter Flat

The *Spirit of the Skier* is a bronze sculpture created by Michael Meszaros to capture the essence of the snow sport and culture. The same sculpture also appears in Mansfield and in Mt Buller's sister resorts overseas. It was donated to Nagano in Japan, where it was unveiled at the 1998 Winter Olympics, and also to Vail ski resort in Colorado, marking the 1999 alpine skiing world championships.

The Mt Buller *Spirit of the Skier* statue has been dedicated to one of the mountain's great skiers, Bernd Greber. Bernd was a well loved instructor and very skilled skier, and was the Director of the Mt Buller Ski & Snowboard School when he died in an avalanche in his home country of Austria in December 2001.

6 The History of Mt Buller Photography Collection

By Eric Burt

The guest lounge in the Arlberg Hotel

Eric Burt has been active in the Australian snow industry for a number of years, with his passion for the sport igniting when he first skied in 1949. His love for skiing has been evident in both his role as the first ever president of the Victorian Snowsports Association and as a consultant to chairlift manufacturer Doppelmayr, where he assisted with purchasing lift equipment for the Australian ski resorts. His close links to the snow industry have combined with his own photographic business to enable him to capture the history of Mt Buller over the years. His collection of works is a historical record of the resort's development.

7 Mt Buller Landscapes Photography Collection

By Bob Bateup

Après Bar and Black Cockatoo Restaurant lounge in the Mt Buller Chalet Hotel

Bob Bateup has spent most of his life working in the mountains. Starting at Perisher Valley in NSW, Whistler Mountain in Canada and then on to Mt Buller in Victoria. He has a real passion for the beauty and changeability of the mountain environment. He has taken many thousands of photographs over the years to capture and share the beauty and excitement of the mountain life. This collection depicts some of his favourite Mt Buller works.





8 Olympic Memorabilia

Reception area in the Mt Buller Chalet

Starting in the reception area of the Mt Buller Chalet you will see a range of *Olympic memorabilia*. A large glass case is filled to the brim with various awards and medals from World and Olympic competitions. Head towards the lifts and on the walls you will see images of Olympic aerialists and Buller girls Jacqui Cooper and Alisa Camplin. Head out the doorway and down the stairs and you will find images of gold medalist Steven Bradbury as well as a flag from the Torino Winter Olympics.



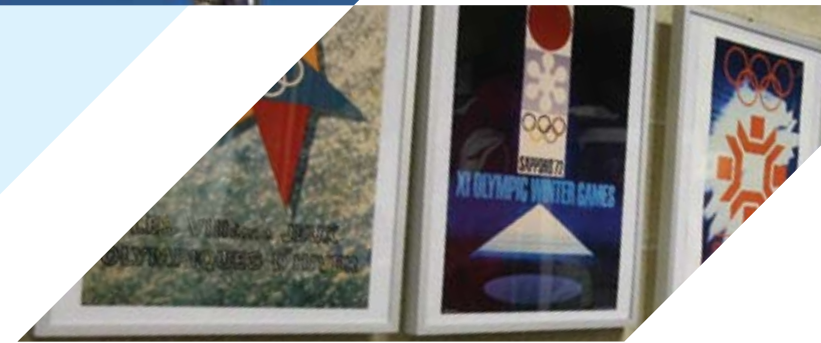
9 Spirit of the Mountain

By Anton Costantino

Deck of the Buller Community Centre

The *Spirit of the Mountain* was awarded the 'Best In Show Sculpture' at the 2007 Mt Buller Easter Art Prize and Exhibition. The sculpture was then acquired by Resort Management in 2007 and installed in this scenic location, perfectly complementing the mountain vistas.

Spirit of the Mountain was created by Anton Costantino as an expression of his love of nature, simple living and celebration of the wonder of life. Anton's works are well represented in a number of private and civic collections in Australia and overseas.



10 National Alpine Museum of Australia

*Level 1, Buller Community Centre
Please contact 5777 6077
for opening hours.*

Mt Buller has a fascinating history, being transformed from a cattleman's run into Australia's premier alpine resort. Learn about the mountain's original characters and marvel at an eclectic collection of ski memorabilia at the *National Alpine Museum*.

The Museum, which opened in October 1999, not only details Buller's journey but the development of Australia's entire alpine history, with hundreds of fascinating artifacts telling the story of evolution of the Victorian ski fields. The museum showcases everything from wooden skis, sleds and leather boots, through to snowboards from the late 80s. It also features a variety of photographs, snowmobiles, clothing, badges, publications, maps and equipment.

11 Mt Buller Art Collection

Various Artists

Level 5 of the Buller Community Centre

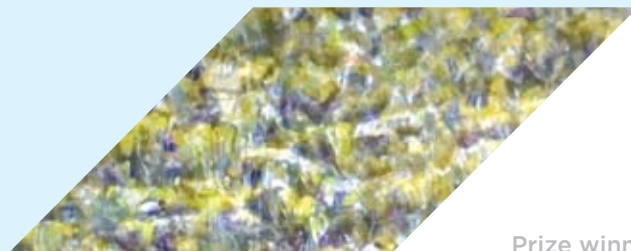
Weekdays from 10am-4pm

Weekends by appointment 5777 7240

Every Easter, the resort hosts the Mt Buller Easter Art Prize and Exhibition. This competition offers one of the largest art prizes in regional Victoria, and has attracted a range of internationally renowned artists such as Judi Singleton, Mitch Mcauley, Sarah Faulkner and Bert Flugelman.

Each year, industry acclaimed artists, sculptors and members of the art community are selected to judge show submissions. In the past, this has included Patrick McCaughey, Robert Nelson, Jeff Makin and Simon Klose.

The Mt Buller and Mt Stirling Alpine Resort Management Board has been acquiring the winning paintings from the Easter Art Prize and Exhibition since its inception in 2002. Many of these works are on display here, along with paintings from the show.



Prize winners on display include:

Snow Gum Textures and Alpine El Nino - Winner

By Reg Cox

Winner Mt Buller Art Prize 2004

Reg Cox seeks inspiration for his work from nature, birds, animals and seasonal features of the land. Reg dares to be different and his innovative approach to watercolour painting, particularly the use of his trademark fantail brushes, as can be seen in both of these works.

Sunlight and Shadow Delatite No 2

By Tony Flint

Winner Mt Buller Art Prize 2005

Tony Flint's work intimately depicts the Australian landscape, with paintings such as this one containing strong environmental overtones.

Wildman Country - Kirby's Flat

By Robert Hollingworth

Winner Mt Buller Art Prize 2008.

This painting is part of a series inspired by the mountains of Central Victoria that form part of the Great Dividing Range. In the late 1870's a man was found living in these 'uninhabitable' ranges who became known as the 'Wildman of Tallarook', hence the name of this painting.

View of Little Buller Spur

By Mark Schaller

Winner Mt Buller Art Prize 2007

This painting depicts a view of the Mt Buller region after the devastation of the 2006/07 summer bushfires. The painting is part of a series of works that deal with the impact of bushfire on the landscape.