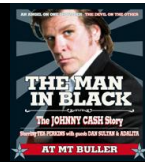


THE MAN IN BLACK MT BULLER

25 February 2012

Guest Information Updated 10 Feb



THE LATEST NEWS

Friday 24 February 2012, from 8pm

- **THE FEARLESS VAMPIRES KILLERS** playing *The Whitt* FREE!!!

Head to the Whitt (opposite the event site) on Summit Road and check out this great live show for free! What a great way to warm up for the event.

Saturday 25 February 2012

- **BEAN BAG HIRE, from 2pm**

Grab a comfy bean bag from Chilli Zone and watch the show in style. Hire rate \$15 per day.

- **BLUE BULLET CHAIRLIFT 4pm – 8pm free for event ticket holders**

Get a bird's eye view on all the action of the event, riding on the Blue Bullet chairlift, from 4pm – 8pm.

- **KIDS' CLUB, 10am – 12 noon OR 1pm – 3pm**

\$27.50 per child per two hour session.

Indoor rock-climbing, archery, ball sports, skate ramp. Supervised activity session with experienced qualified recreation staff.

Refer Kids' Club entry for more information. Bookings on 1800 BULLER.

- **COACH SERVICE EX MELBOURNE**

V-Line service departs Southern Cross Station 8.30am, arrives Mansfield 11.35am. **Book on 136 196.** Transfer to MMBL service departs Mansfield 1pm, arrives Mt Buller 2.00pm. Book on 1800 BULLER.

- **CONFIRMED LINE UP**

3pm Local Band / 4.15pm The Bowers / 5.30pm The Fearless Vampire Killers / 6.45pm Adalita / 8.00pm Dan Sultan / 9.30pm The Man in Black

ACTIVITIES

Mt Buller offers a range of activities for adults and kids. This includes bushwalking, mountain biking and self guided interpretive walks. In addition our bars and restaurants will open for you to enjoy some rest and relaxation! To check out more details go to the Mt Buller website www.mtbuller.com.au

ANIMALS

Domestic dogs and cats (any non-native animal) are not permitted to enter the Alpine Resort. The aim of these regulations is to ensure that a clean, friendly and safe environment is maintained for Mt Buller's wildlife and year round visitors.

Guide and assistance dogs are permitted, in line with Victorian legislation.

ATMs

Mansfield - There are Westpac, ANZ, NAB, CBA and Bendigo ATMs in Mansfield.

Mt Buller - National Australia Bank has an ATM located in Cow Camp Plaza, in the Village Square; on-mountain businesses may allow small cash withdrawals or advances.

To avoid queuing or the possibility of the machine running out of cash we recommend that you bring adequate cash to the event.

CHILDREN – UNDER 18

There are facilities for families and you are welcome to bring kids. Event entry is free for kids aged five and under. Guests aged between 6 and 17 will be charged \$45 plus booking fee.

KIDS' CLUB

Saturday 25 February 2012, 10am - 12 noon OR 1pm - 3pm

\$27.50 per child per two hour session.

Indoor rock-climbing, archery, ball sports, skate ramp. Supervised activity session with experienced qualified recreation staff.

Kids aged 4 - 8 MUST be accompanied by an adult AT ALL TIMES. Children 9 and over unrestricted. Not suitable for kids under 4.

Call 1800 BULLER or 0409 775 872 or email alpineinstitute@bigpond.com

DISABLED GUESTS

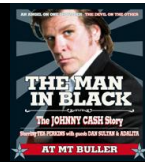
Disabled access and facilities around Mt Buller are limited. All stage areas are accessible via roads or the ramp area of Athlete's Walk, but it should be noted that the ascent is steep. It should also be noted that any persons who have considerable mobility restrictions may find general accommodation inappropriate.



THE MAN IN BLACK MT BULLER

25 February 2012

Guest Information Updated 10 Feb



FOOD AND BEVERAGE

There will be a variety of food and beverage operators open for the weekend, offering a range of dining styles from fine dining to take away burgers. Additional food vendors and bars will operate from the event site. **No BYO alcohol to the event site.**

FUEL

16kms BEFORE the Mt Buller Village Mirimbah Store will be open throughout the event for fuel, sensational café style meals, groceries, papers and coffee. Phone 5777 7528.

GENERAL SUPPLIES

Mt Buller Foodworks Licensed Supermarket will be open during the weekend for groceries, newspapers, meat, fruit and veg, bread and alcohol. Ph 5777 6133

INTERNET

Telstra and Optus 3G networks provide full wireless coverage on the mountain. For general access there are Netkiosk facilities located in Cow Camp Plaza for \$2 per 10 minutes.

ROAD CLOSURES / RESORT ACCESS

Whilst there will be no formal road closures, for the safety and amenity of all event goers, general traffic will not be permitted to enter the Mt Buller Village.

PARKING RESTRICTIONS

Overnight guests - Overnight guests will be permitted to enter the Resort for 30 minutes to drop off bags, and then must return their vehicle to the car parks. Regular shuttles will return guests from the car park to the village.

Day guests - All day visitors will be directed to park in the car parks. Regular shuttles will deliver guests to the village.

SHUTTLE TIMETABLE

Friday 24 February		
Car Park	Mt Buller accommodation	4pm – 11pm
Saturday 25 February		
Car Park	Mt Buller Village Square	11am – 1am Sunday
Mt Buller Village Square	Accommodation	12 noon – 5pm
Sunday 26 February		
Mt Buller Village Square	Car Park	10am – 2pm

TICKETING / WRISTBANDS

- Ticketmaster www.ticketmaster.com.au
- High Country Reservations 1800 BULLER www.mansfieldmtbuller.com.au

Unless sold out, tickets will be available at Mansfield Visitor Information Centre, and from the event entry located on Bourke St.

Wristband exchange will take place at the event entry located on Bourke St. Guests must ensure they have their ticket, and ID if over 18. Guests without appropriate ID will be issued a child's wristband.

VENUE

The event site is located on the natural amphitheatre created by the Bourke St ski run in the heart of the Mt Buller Village. The venue is outdoors, and seating is general admission on gently sloping grass. The site will be fully fenced and access will only be permitted to ticket holders.

VILLAGE MAP

A map showing the full layout of Mt Buller village and its facilities can be obtained from the website.

WHAT TO BRING

During the day you will need a hat, sunscreen and insect repellent. Because of the varying nature of the alpine environment you should also bring warm and waterproof clothing. Seating is on grass so it is recommended you include a blanket. You are welcome to bring bean bags or cushions. We ask that you do not bring camping chairs.

Check your accommodation documents for anything else you may need to bring.

MORE INFORMATION

email info@mtbuller.com.au

websites www.mtbuller.com.au

www.themaninblack.com.au

www.mansfieldmtbuller.com.au

