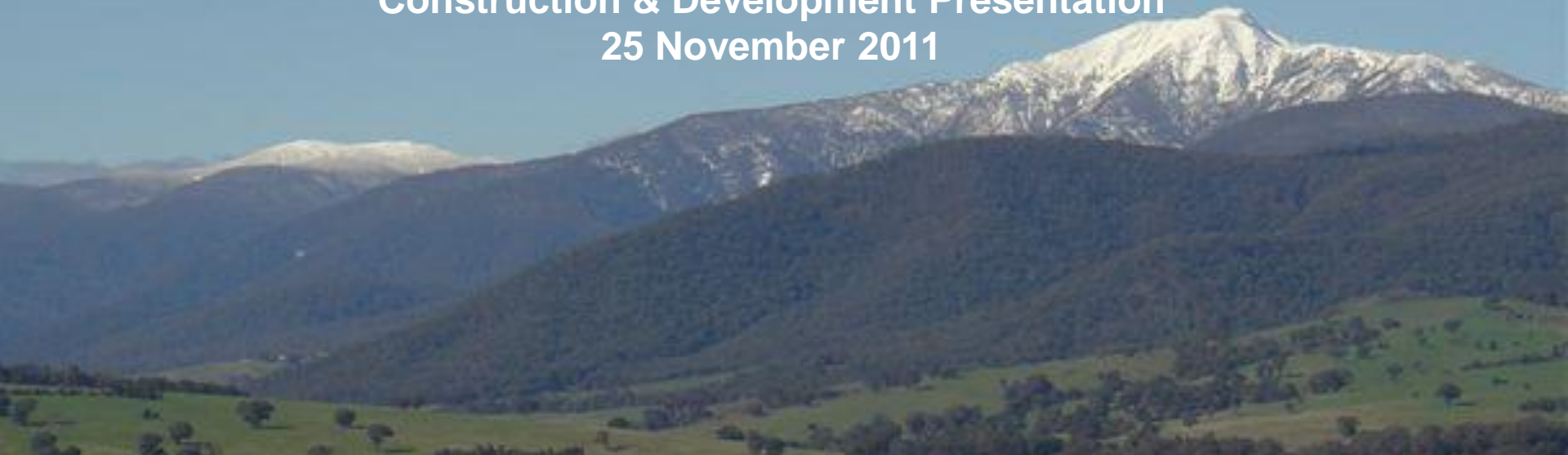




**Mt Buller
Mt Stirling**
Resort Management.

COMMUNITY FORUM
Construction & Development Presentation
25 November 2011



Things to think about



- Planning Process
- Utilities
- Environmental Issues
- Site Management & Presentation
- Who to contact
- Leasing Implications

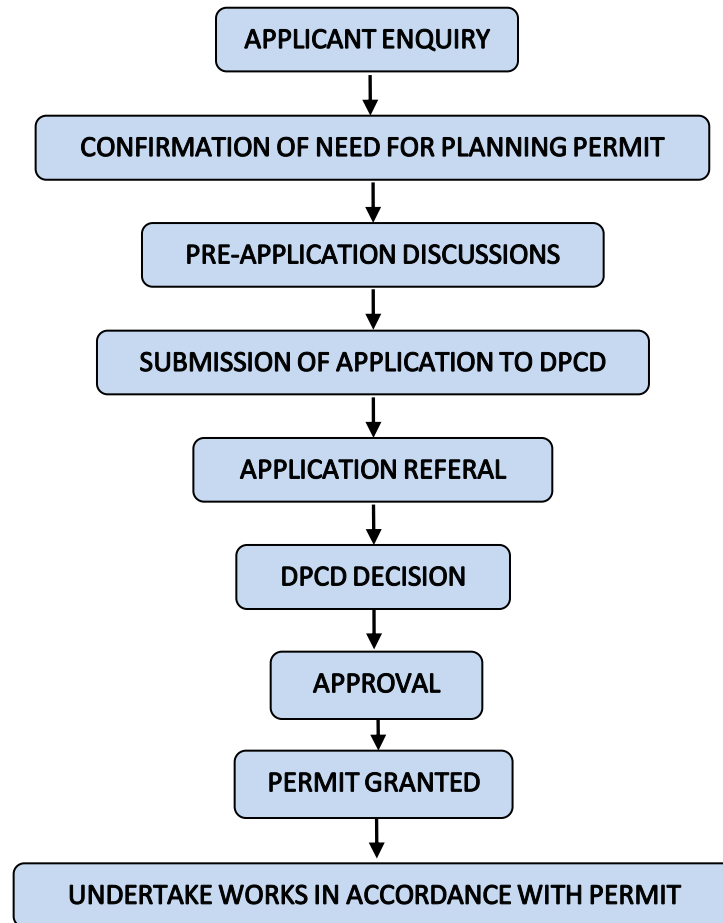
Planning Process



Mount Buller Alpine Resort is covered by the **Alpine Resorts Planning Scheme**

- This Scheme is administered by the Department of Planning and Community Development (DPCD) for the Minister of Planning as the *Responsible Authority*
- All planning applications are forwarded by DPCD to the Board as a *Referral Authority*
- The Board and DPCD encourage applicants to arrange pre-application meetings with both entities to facilitate a smooth passage of a permit application.

Planning Process



Utilities



- Electricity - SP Ausnet
- Telephone - Telstra
- Gas - Buller Gas
- Water & Sewage - RMB

DIAL BEFORE YOU DIG

Environmental Issues



- Native Vegetation Framework: *Avoid, Minimise, Offset*
- Flora & Fauna Studies and Net-gain
- Cultural Heritage
- Geotechnical Assessment
- Erosion & Sediment Control
- Bushfire Management Overlay
- Site Environmental Management Plan (SEMP)

SEMP



1. Project Description
2. Project Management
3. Site Environmental Values
4. Construction Impact Management
5. Site Construction Management Plan
6. Site Revegetation Plan

Site Management & Presentation



- Construction Season
- Special Events
- Road Closures
- Traffic Management
- Security
- Amenity

Other Authorities



-
- Worksafe
 - Plumbing Commission
 - Building Commission

Contacts



ARMB (Planning & Leasing)

Jonathan Chivers jon@mtbuller.com.au 03 5777 7207

ARMB (Planning & Development)

Paul McNamara paul.m@mtbuller.com.au 03 5777 7220

Department of Planning & Community Development

Ben Howells Ben.Howells@dpcd.vic.gov.au 03 9098 8919

SP AusNet

Dave Mozuras david.mozuras@sp-ausnet.com.au 1300 360 795

Buller Gas

1800 427 497

Dial Before You Dig

www.1100.com.au 1100

Useful Links



ARMB

<http://www.mtbuller.com.au/rmb/>

Department of Planning & Community Development

<http://www.dpcd.vic.gov.au/planning>

<http://www.dpcd.vic.gov.au/planning/planning-applications/More-information-on-permits/alpine-planning-information-kit>

Cultural Heritage

<http://www.dpcd.vic.gov.au/indigenous/aboriginal-cultural-heritage/cultural-heritage-management-plans>

Department of Sustainability & Environment

<http://www.dse.vic.gov.au/land-management/victorias-native-vegetation-management-a-framework-for-action>

Dial Before You Dig

www.1100.com.au

Leasing Implications



- Alpine Resorts Leasing Policy 2002.
- Lease term linked to level of development.
- Lease obligations.

QUESTIONS?

